

## Visual FECON the Visualisation under Windows



### 1. Introduction

**Visual FECON** - the optimised process visualisation for the controllers of **FELLER ENGINEERING** is established in the market since many years. The system grows permanently. The operation is still as comfortable and intuitive as before. All over the world the process values from controllers and control systems are displayed and stored reliably.

The purposes of users are really different:

- Controlling of complete extrusion lines.
- Acquisition of data from automotive producers referring to ISO-certification.
- Operation and supervision of large extended pipe systems in the chemical industry.
- General failure statistic by long term acquisition from all devices of **FELLER ENGINEERING** via default interface RS485.

The program is directly after quick installation ready to use. There are no specialists required. Standard knowledge of Windows® is sufficient.

After comfortable installation from CD-ROM and connection to the controllers by 2-wire cable, the program is able to verify and indicate the measured values at the PC. **Visual FECON** recognizes the linked devices by the autoseup function and adjusts itself to the special tasks.

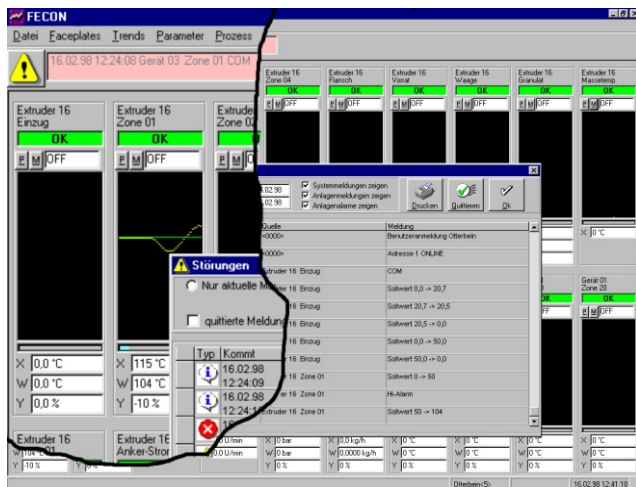
**Visual FECON** is completely developed by **FELLER ENGINEERING**. Customer specific modifications may be performed easily and directly. A single call to the phone assistance group will provide support for **Visual FECON** software and the connected hardware controllers. Updates are offered free of charge. A version for demonstration is available from the homepage [www.fellereng.de](http://www.fellereng.de).

The modular structure allows customized extensions depending on functional groups and the number of connected units to meet the actual requirements.

### 2. Short description by highlights

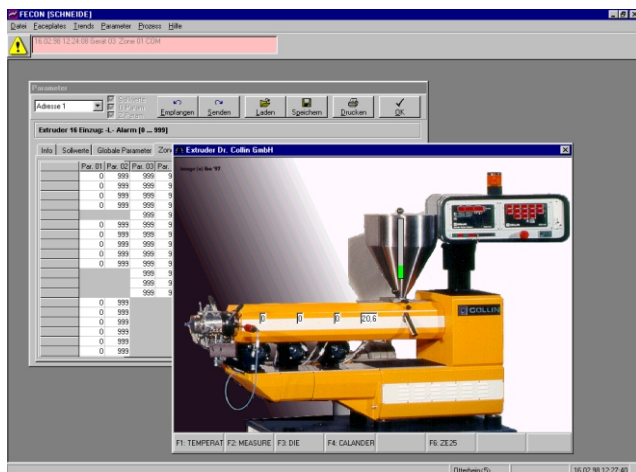
- Permanent data recording of all process related values to the harddisk (cycle time is 1 s).
- Evaluation and display of the recorded data showing historical trends (line chart). A single trend screen will show up to 16 free selectable trends simultaneously. 30 different trends may be preselected.
- Several statistic functions (minimal, maximal and deviation) are available for a selectable time frame.
- Long term histogram recordings of several days can be displayed on a single screen.

- Comfortable management of error lists including export function
- Complete, text operated parameter setting for all connected units includes recipe management, print and export functions (EXCEL, dBASE, ACCESS, CSV...)



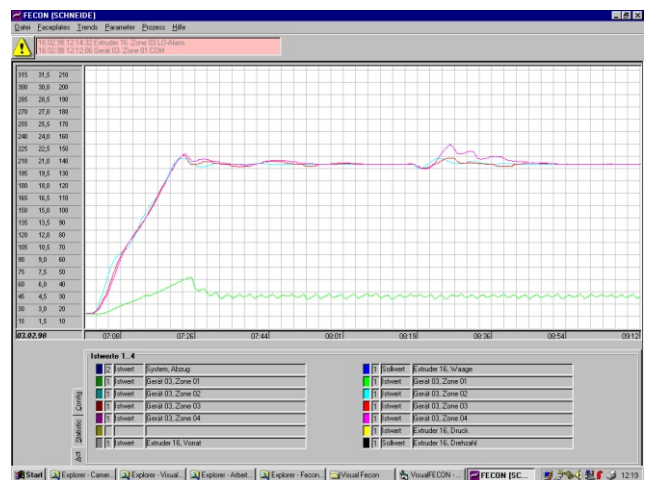
Display of zones as faceplates with faded in error list. (partly magnified)

- Individual total overview of the zones by selectable faceplates. These present the important indicators of single zones.
- Implementation of scanned or externally designed drawings for process pictures. **Visual FECON** will present the measured values "live" by overlays at the referring location.



scanned photo for process picture

- Interlock function in 4 levels by user names and password protection.
- Specially for the hotrunner purpose designed modul "ToolDoctor". This option is a diagnosis program, that recognizes e.g. mixed sensor wiring after mold change, defective heaters and other connection-failures. A consequent protocol for the tool finishes the task.
- Acoustic alarm report
- Links to supervisory systems are available by TCP/IP via network.
- Alarm reports may be transmitted with an external GSM modem via SMS.



Trend-Display of historical data

### 3. System requirements

PC with installed Windows® operation system and printer, graphic resolution min. 800x600 pxs.

### 4. Delivery time

Visual FECON is generally available ex stock. PC with installed Windows '95™, Windows '98™, Windows 2000™, Windows NT™, Windows XP™ and printer.

**FELLER ENGINEERING GmbH** · Carl-Zeiss-Str. 14 · 63322 Rödermark / Germany  
 Phone +49 (0) 6074 / 8949-0 · Fax +49 (0) 6074 / 8949-49  
 Service / Hotline +49 (0) 6074 / 8949-31  
 Internet: [www.fellereng.de](http://www.fellereng.de) · e-mail: [info@fellereng.de](mailto:info@fellereng.de)